



RUTGERS

School of Public Health

Community Based Participatory Research

**Building a Culture of Health Conference
September 27, 2018**

Leslie M. Kantor, PhD, MPH

Professor and Chair

Department of Urban-Global Public Health

Community-based Participatory Research

Community-wide research

Community-involved research

Community-centered research

Not knowledge for knowledge's sake

Principal #2

Build on strengths and resources within the
community

Revised Principle #2

Listen to, learn from, and identify what each partner brings to the process – build on strengths and find solutions to challenges

Principle #2 in practice

Recognize and be transparent about your issues of control. Build in opportunities for people to have voice throughout the project – not just in the areas you assume are their expertise. Structurally balance power by using rules such as no decisions are made without 3 community members for every researcher.

Principle #4

Promote co-learning and capacity building
among all partners

Revised Principle #4

Ensure all partners learn, grow, and share throughout the process.

Principle #4 in practice

Routinely check in with the community as to what their needs are and what gains can be made. Disseminate information back to ALL; inform and communicate what is learned.

Principle #9

Establish a long-term commitment to the process.

Revised Principle #9

Commit to the problem, process, and evolving relationships.

Revised Principle #9 in practice

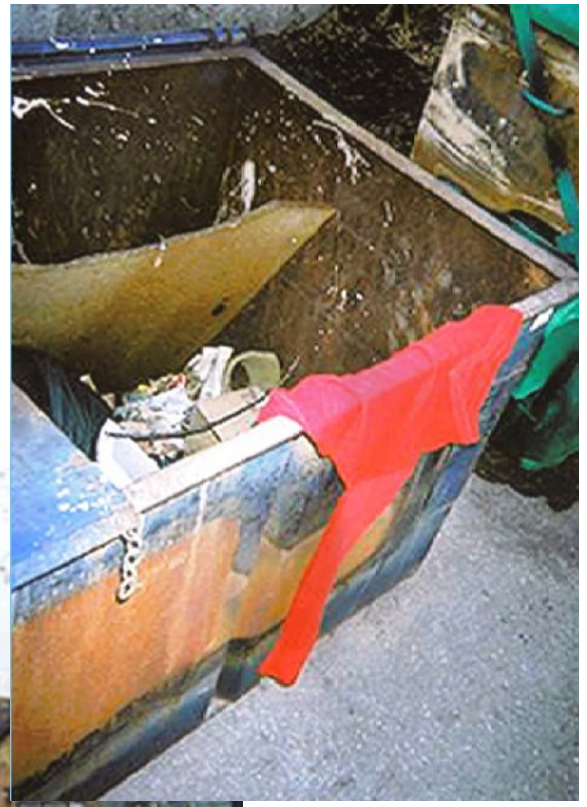
Encourage on-going communication.

Identify a point person responsible for communication. Meet regularly with agreed upon frequency.

Identify one person to serve as liaison from community and one from academic institution.

Committing to being involved.

Photovoice



Palibroda, M., Krieg, B., Murdock, L., Havelock, J. (2009). *A Practical Guide to Photovoice: Sharing Pictures, Telling Stories, and Changing Communities*. Winnipeg, Manitoba, CA: The Prairie Women's Health Center of Excellence.

Thank you!

Leslie.Kantor@Rutgers.edu

sph.rutgers.edu

Follow Us @RutgersSPH

